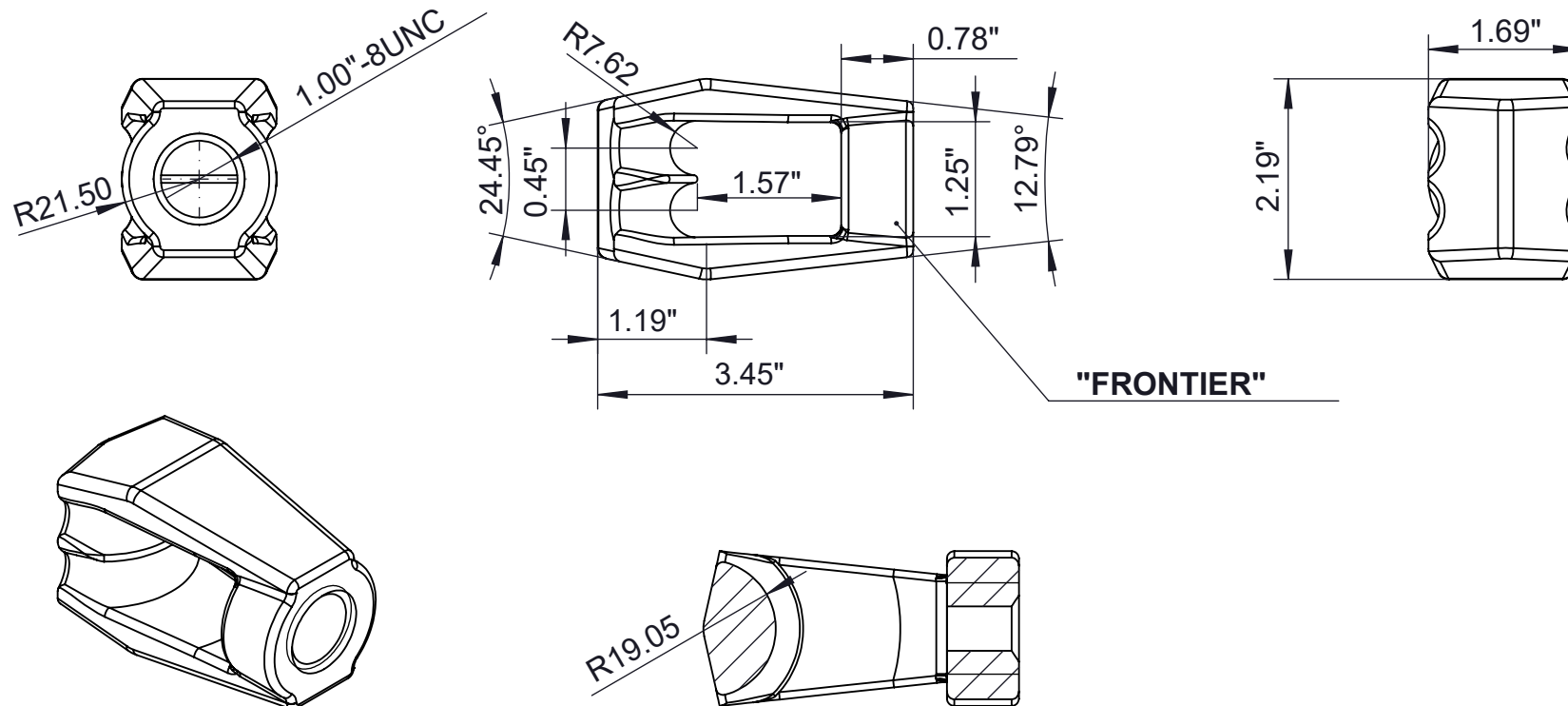


Distributed exclusively by:

**Lakeport Power Ltd.**  
169 Industrial Park Road  
Colborne, Ontario  
www.lakeportpower.com | 905-355-3281



**NOTES:**

1. FOR USE WITH POWER-INSTALLED SCREW ANCHOR (PISA) STYLE ANCHOR RODS
2. HOT DIPPED GALVANIZED PER ASTM A153
3. TENSILE STRENGTH: 36,000LBS
4. MARKED WITH "FRONTIER" BRANDING FOR TRACEABILITY

**Twin Eye Nut w/ 1" Threads**

**Catalog Number: 425PTEN**