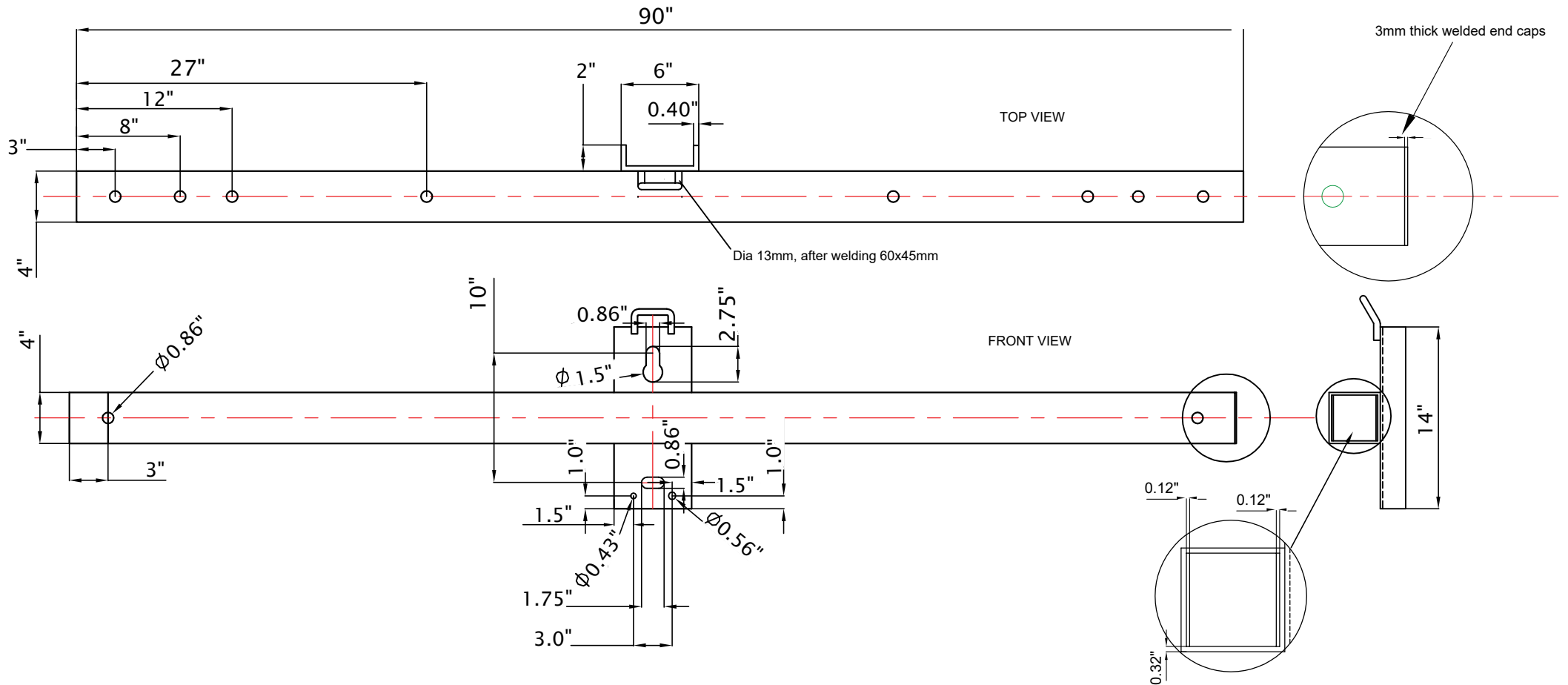


151 Industrial Park Rd
Colborne, ON K0K 1S0
905-355-3281



NOTES:

1. HOT DIPPED GALVANIZED IN ACCORDANCE WITH CSA G164
2. HOLLOW SECTION AND CHANNEL BEAM MADE OF STRUCTURAL STEEL CONFORMING TO CSA C83 AND G40.21

**Hollow Steel Crossarm,
4" x 4" x 90"L**

**Frontier Part
Number:**

401HSC76