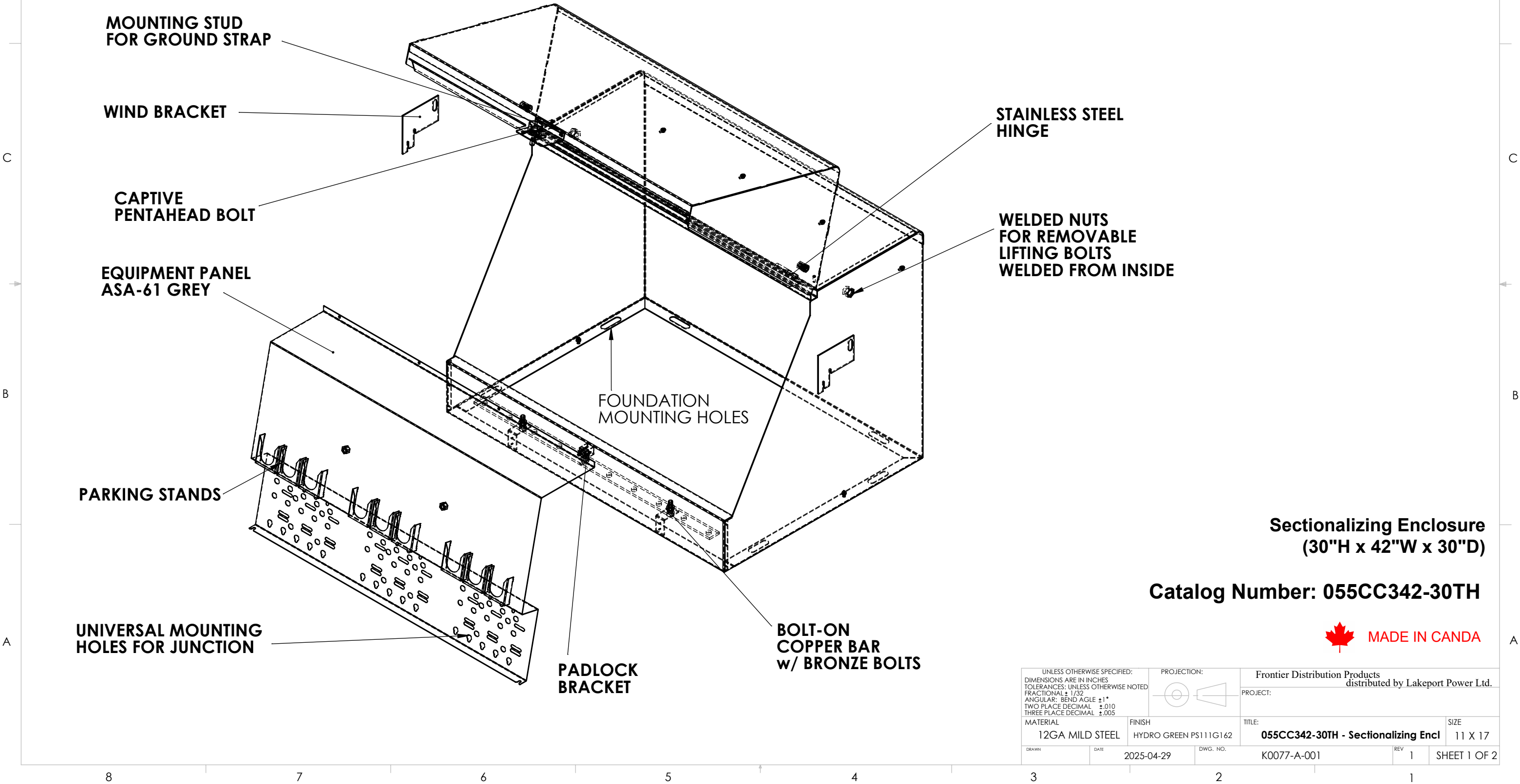
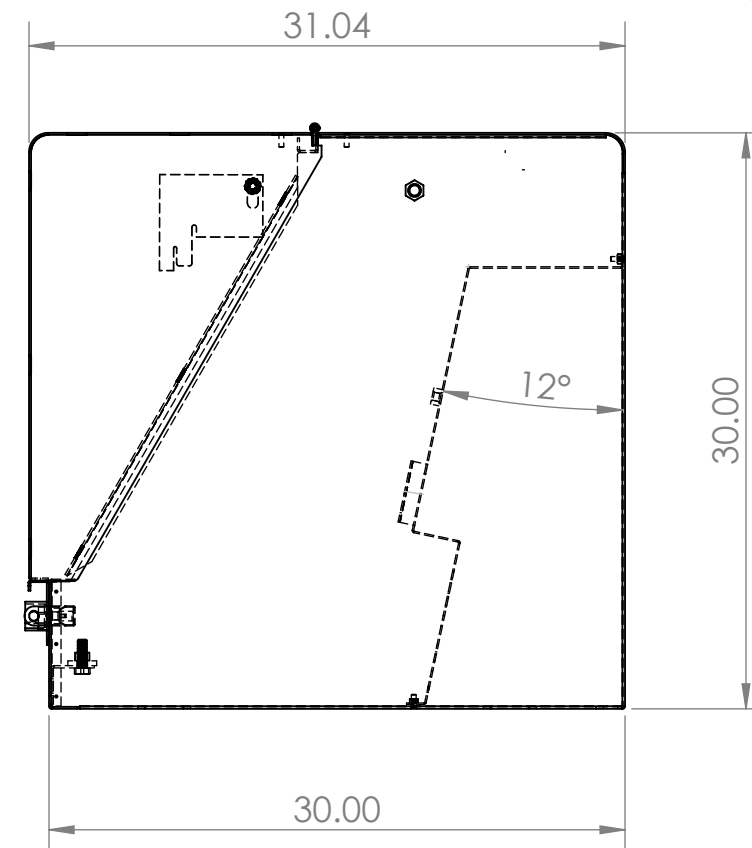
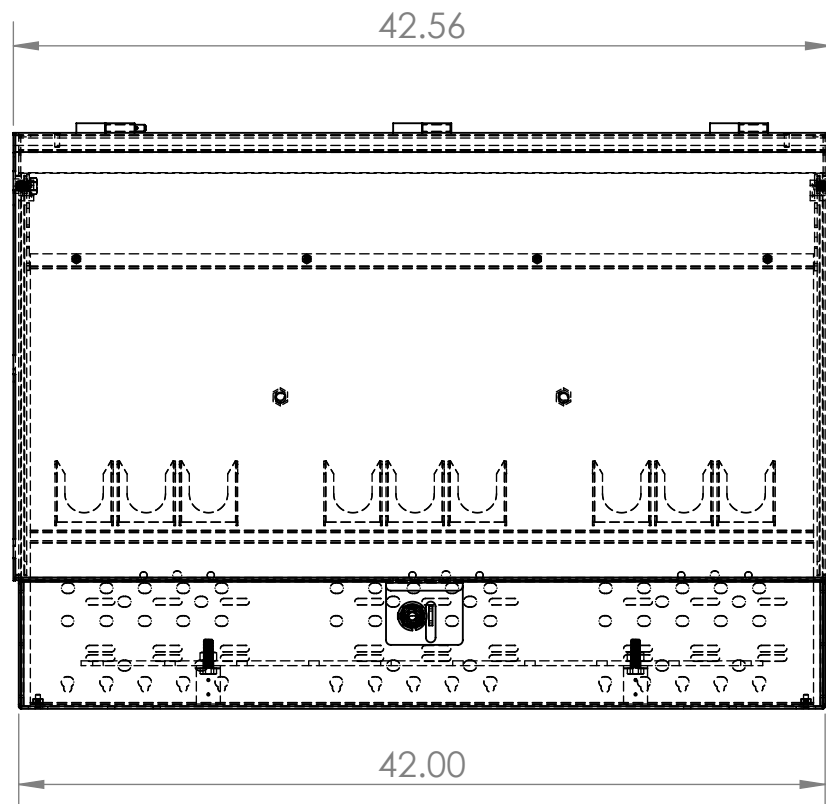
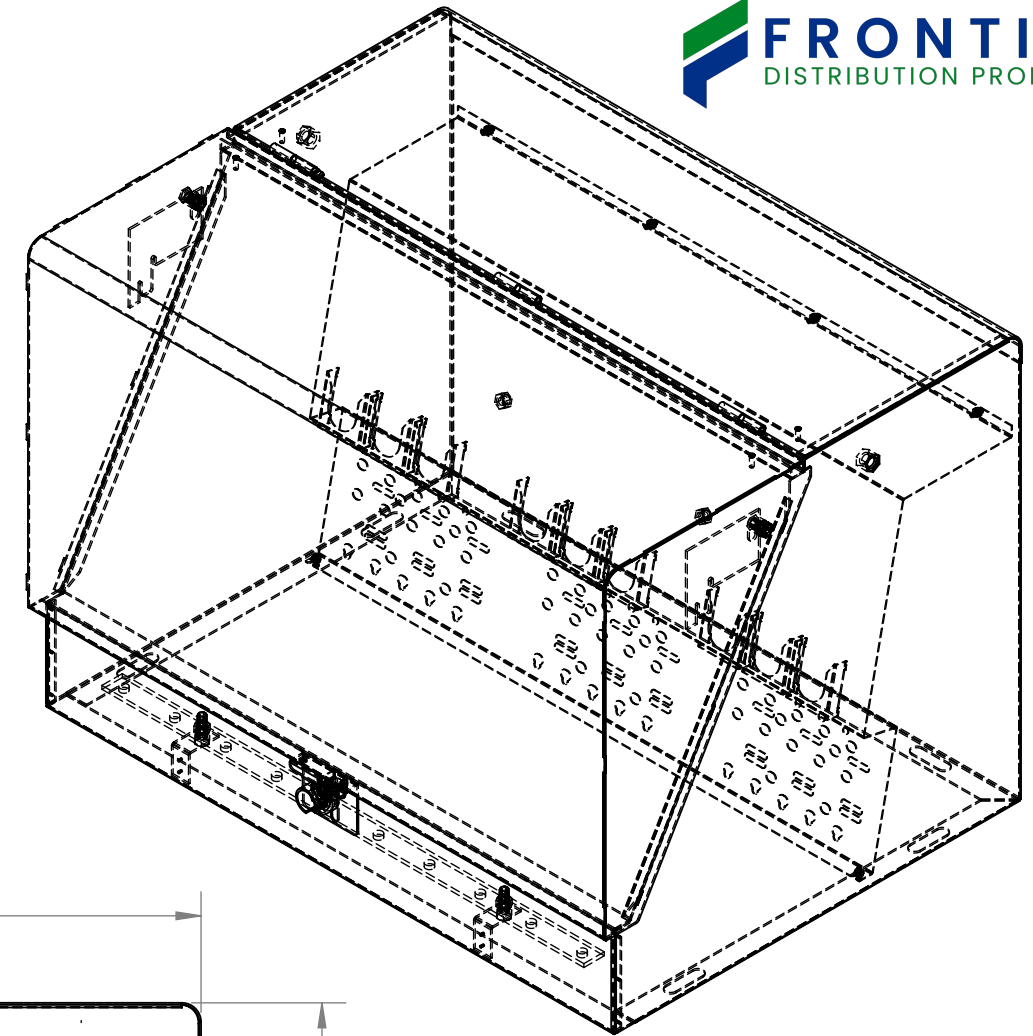
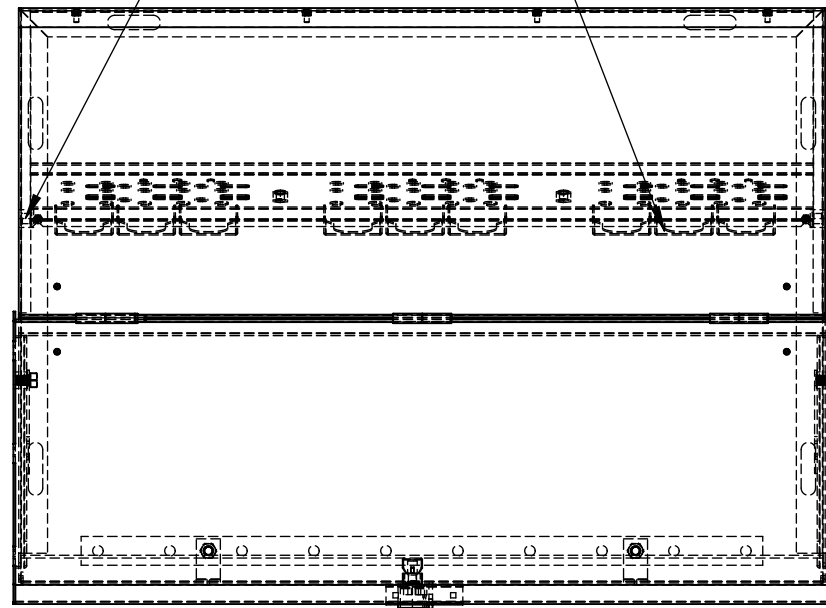



DWG.#	CC342-30TH		7	6	5	4	3	2	1
ITEM NO.	PART NUMBER	DESCRIPTION			QTY.				
1	K0077-A-002-OPEN	CC342-30TH - LO-PRO SECTIONALIZING ENCLOSURE - PAINTED EQUIP. GREEN			1				
2	K0024-P-016	WIND BRACKET			2				
3	K0077-W-004	EQUIPMENT PANEL, ASA-61 GREY			1				
4	95462A029	SS 1/4-20 NUT			6				
5	92620A709	SS-1/4 Hex Head Screw			2				
6	K0077-A-003	GROUND BAR WITH 92941A716-1/2-13 BRONZE BOLT, 92676A470-1/2-13 BRONZE NUT			1				
7	61216202 SHOP	PENTA BOLT			1				



151 INDUSTRIAL PARK RD., COLBORNE, ONTARIO
WWW.FRONTIERDISTRIBUTIONPRODUCTS.COM



2 LIFTING NUTS
WELDED FROM INSIDE MADE IN CANADA

UNLESS OTHERWISE SPECIFIED: DIMENSIONS ARE IN INCHES TOLERANCES: UNLESS OTHERWISE NOTED FRACTIONAL $\pm 1/32$ ANGULAR: BEND ANGLE $\pm 1^\circ$ TWO PLACE DECIMAL ± 0.010 THREE PLACE DECIMAL ± 0.005		PROJECTION: 	www.frontierdistributionproducts.com	
MATERIAL 12GA MILD STEEL		FINISH HYDRO GREEN PS111G162	TITLE: 055CC342-30TH - Sectionalizer	SIZE 11 X 17
DRAWN	DATE 2025-04-29	DWG. NO. K0077-A-001	REV 1	SHEET 2 OF 2